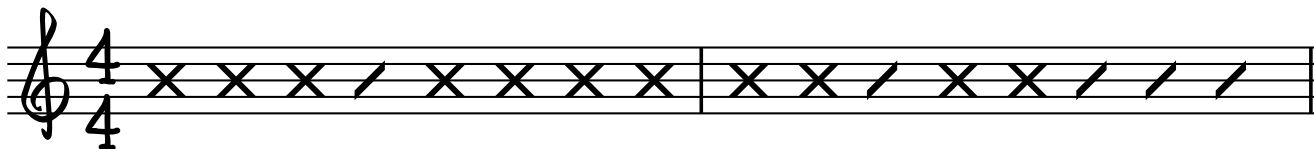


# FASIT

## RYTMEDIKTAT

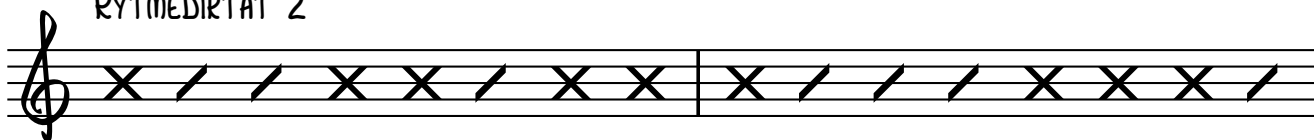
### RYTMEDIKTAT 1



SKRIV OM TIL NOTER



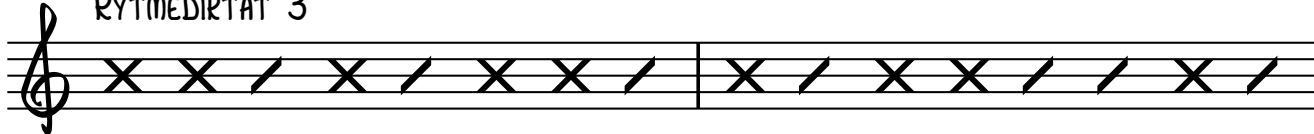
### RYTMEDIKTAT 2



SKRIV OM TIL NOTER



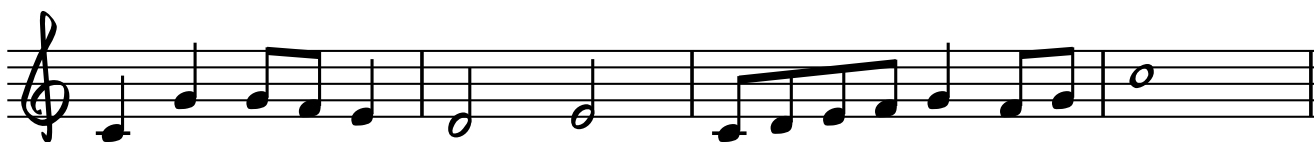
### RYTMEDIKTAT 3



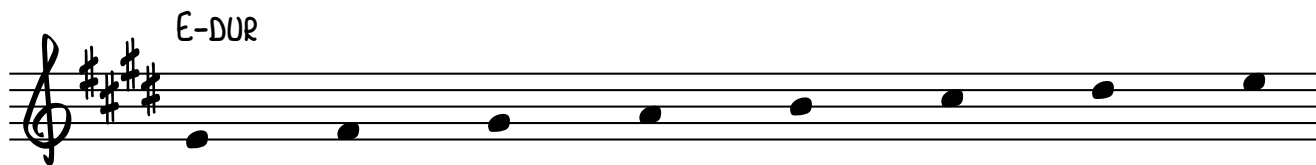
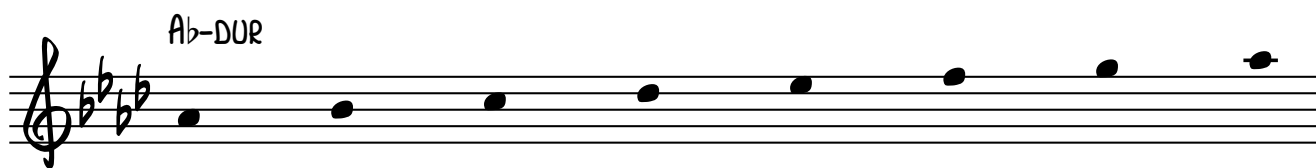
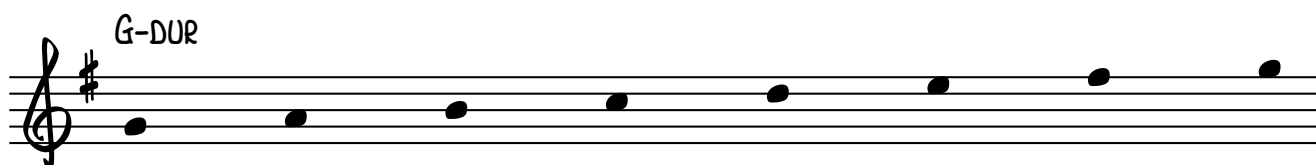
SKRIV OM TIL NOTER



## MELODIDIKTAT



## SKALAER MED FASTE FORTEGN



## HVILKE INTERVALLER HØRER DU?

1	2	3	4	5
STOR TERS	REIN KVART	REIN OKTAV	REIN KVINT	STOR SEKUND

6	7	8	9	10
REN PRIM	STOR SEKST	STOR TERS	STOR SEPTIM	REIN KVINT

## SKRIV NED FØLGENDE AKKORDER PÅ NOTER

Am	Dm	G	E <sub>b</sub>	E <sub>m</sub>	A
----	----	---	----------------	----------------	---

The musical staff shows the following chord diagrams:

- Am:** A whole note chord with notes A, C, and E.
- Dm:** A whole note chord with notes D, F, and A.
- G:** A whole note chord with notes G, B, and D.
- E<sub>b</sub>:** A whole note chord with notes E<sub>b</sub>, G, and B<sub>b</sub>.
- E<sub>m</sub>:** A whole note chord with notes E, G, and B.
- A:** A whole note chord with notes A, C, and E.