

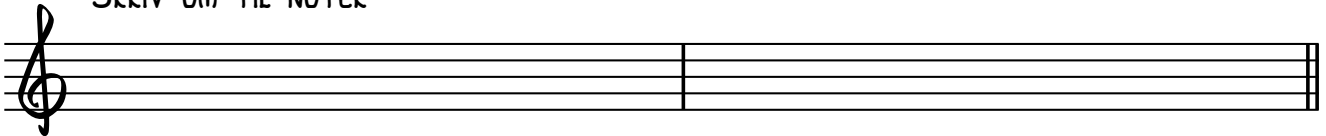
RYTMEDIKTAT

NAVN:

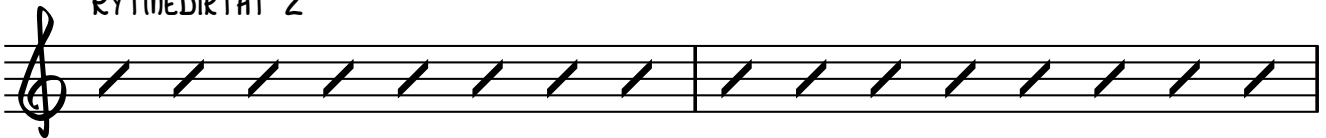
RYTMEDIKTAT 1



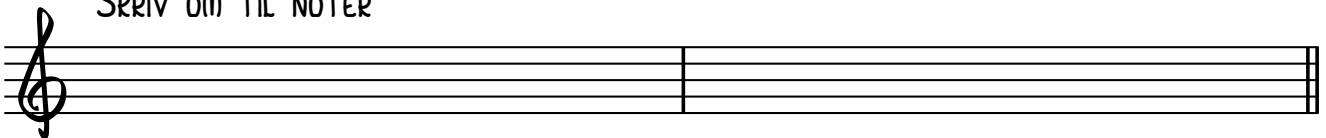
SKRIV OM TIL NOTER



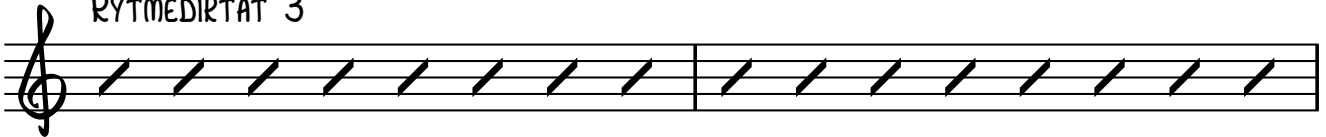
RYTMEDIKTAT 2



SKRIV OM TIL NOTER



RYTMEDIKTAT 3

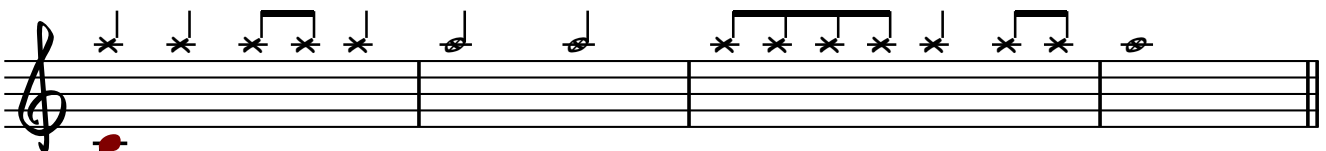


SKRIV OM TIL NOTER

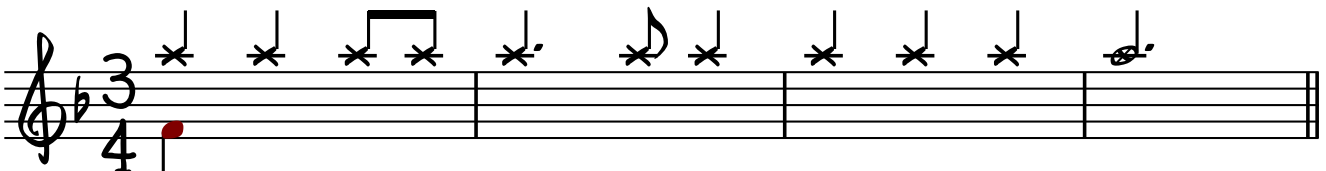


MELODIDIKTAT

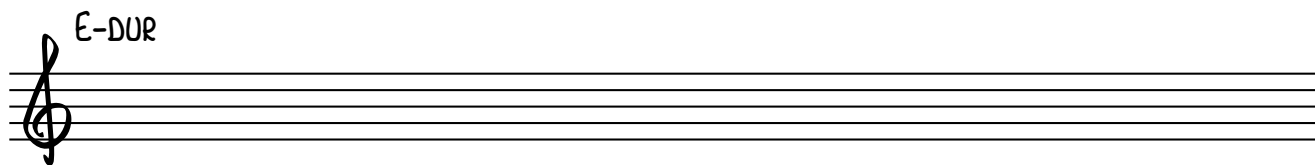
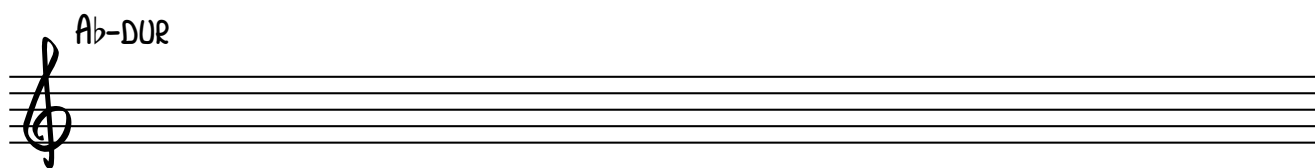
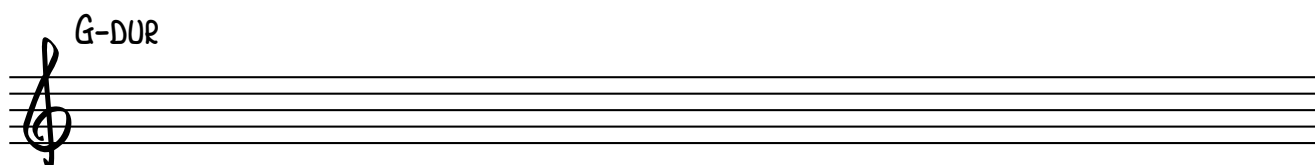
MELODIDIKTAT 1



MELODIDIKTAT 2

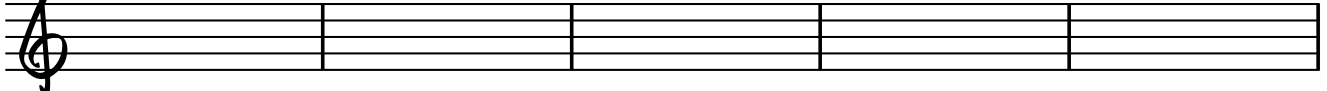


SKALAER MED FASTE FORTEGN

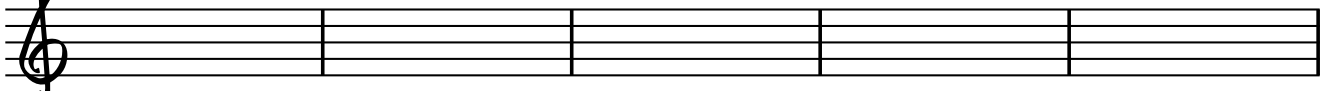


HVILKE INTERVALLER HØRER DU?

1 2 3 4 5




6 7 8 9 10



The image shows two musical staves in treble clef. The first staff has five empty measures, each labeled with a number from 1 to 5 above it. The second staff also has five empty measures, each labeled with a number from 6 to 10 above it. The staves are intended for the student to write notes to identify intervals.

SKRIV NED FØLGENDE AKKORDER PÅ NOTER

A_m D_m G E_b E_m A



The image shows a musical staff in treble clef with six empty measures. Above each measure is a chord symbol: A_m, D_m, G, E_b, E_m, and A. The staff is intended for the student to write the notes for each chord.