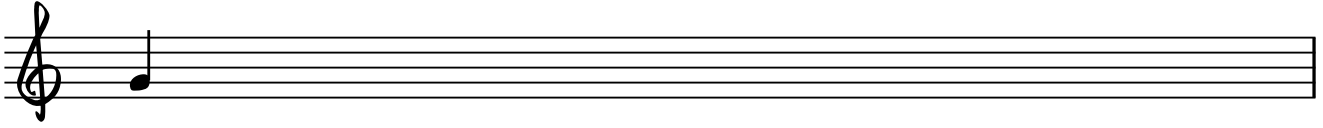


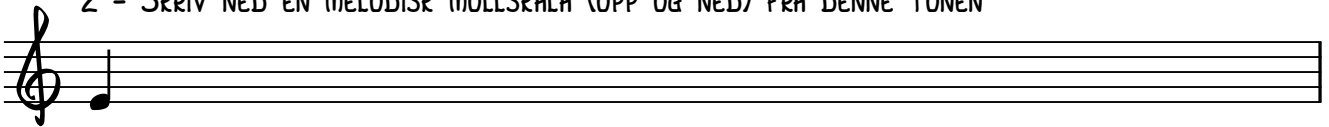
OPPGAVESETT

SKALAER

1 - SKRIV NED EN REN MOLLSKALA FRA DENNE TONEN



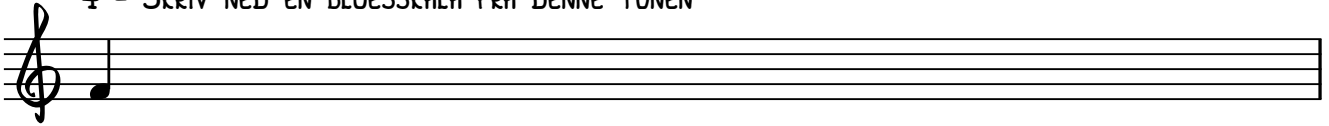
2 - SKRIV NED EN MELODISK MOLLSKALA (OPP OG NED) FRA DENNE TONEN



3 - SKRIV NED EN HARMONISK MOLLSKALA FRA DENNE TONEN

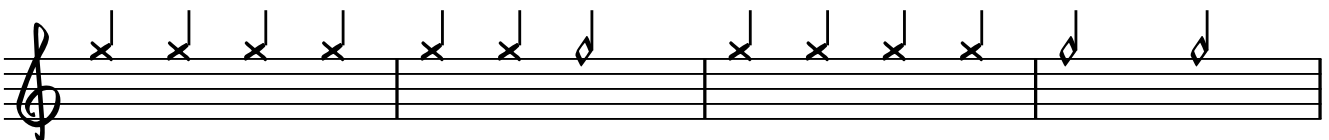


4 - SKRIV NED EN BLUCESSKALA FRA DENNE TONEN



MELODIDIKTAT 1

SKRIV NED MELODIEN
RYTMEN STÅR MARKERT ØVERST PÅ LINJA
MELODIEN GÅR I HARMONISK MOLL
KLARER DU Å SETTE PÅ AKKORDER (BESIFRING) OGSÅ?



MELODIDIKTAT 2

SKRIV NED MELODI OG BASS

DETTE MUSIKKSTYRKET BYGGER PÅ BLUCESSKALAEN.

RYTMENE STÅR ØVERST PÅ HVER LINJE, OG STARTTONEN ER SATT INN.

The first system consists of two staves. The top staff is a treble clef with a starting note (G4) and a series of rhythmic patterns marked with 'x' above the notes. The bottom staff is a bass clef with a starting note (G2) and a series of rhythmic patterns marked with 'x' above the notes. The patterns are: Treble: G4 (x), A4 (x), B4 (x), C5 (x), B4-A4 (x), G4-F4 (x), E4-D4 (x), C4 (x), B3 (x), A3 (x), G3 (x), F3 (x), E3 (x), D3 (x), C3 (x), B2 (x), A2 (x), G2 (x). Bass: G2 (x), F2 (x), E2 (x), D2 (x), C2 (x), B1 (x), A1 (x), G1 (x), F1 (x), E1 (x), D1 (x), C1 (x), B0 (x), A0 (x), G0 (x), F0 (x), E0 (x), D0 (x), C0 (x), B-1 (x), A-1 (x), G-1 (x).

The second system consists of two staves. The top staff is a treble clef with a starting note (G4) and a series of rhythmic patterns marked with 'x' above the notes. The bottom staff is a bass clef with a starting note (G2) and a series of rhythmic patterns marked with 'x' above the notes. The patterns are: Treble: G4 (x), A4 (x), B4 (x), C5 (x), B4-A4 (x), G4-F4 (x), E4-D4 (x), C4 (x), B3 (x), A3 (x), G3 (x), F3 (x), E3 (x), D3 (x), C3 (x), B2 (x), A2 (x), G2 (x). Bass: G2 (x), F2 (x), E2 (x), D2 (x), C2 (x), B1 (x), A1 (x), G1 (x), F1 (x), E1 (x), D1 (x), C1 (x), B0 (x), A0 (x), G0 (x), F0 (x), E0 (x), D0 (x), C0 (x), B-1 (x), A-1 (x), G-1 (x).

HVILKE AKKORDER ER DETTE?

AKKORDER

The third system consists of two staves. The top staff is a treble clef with five chords: G4, A4, B4, C5, B4-A4, G4-F4, E4-D4, C4, B3, A3, G3, F3, E3, D3, C3, B2, A2, G2. The bottom staff is a bass clef with five chords: G2, F2, E2, D2, C2, B1, A1, G1, F1, E1, D1, C1, B0, A0, G0, F0, E0, D0, C0, B-1, A-1, G-1.